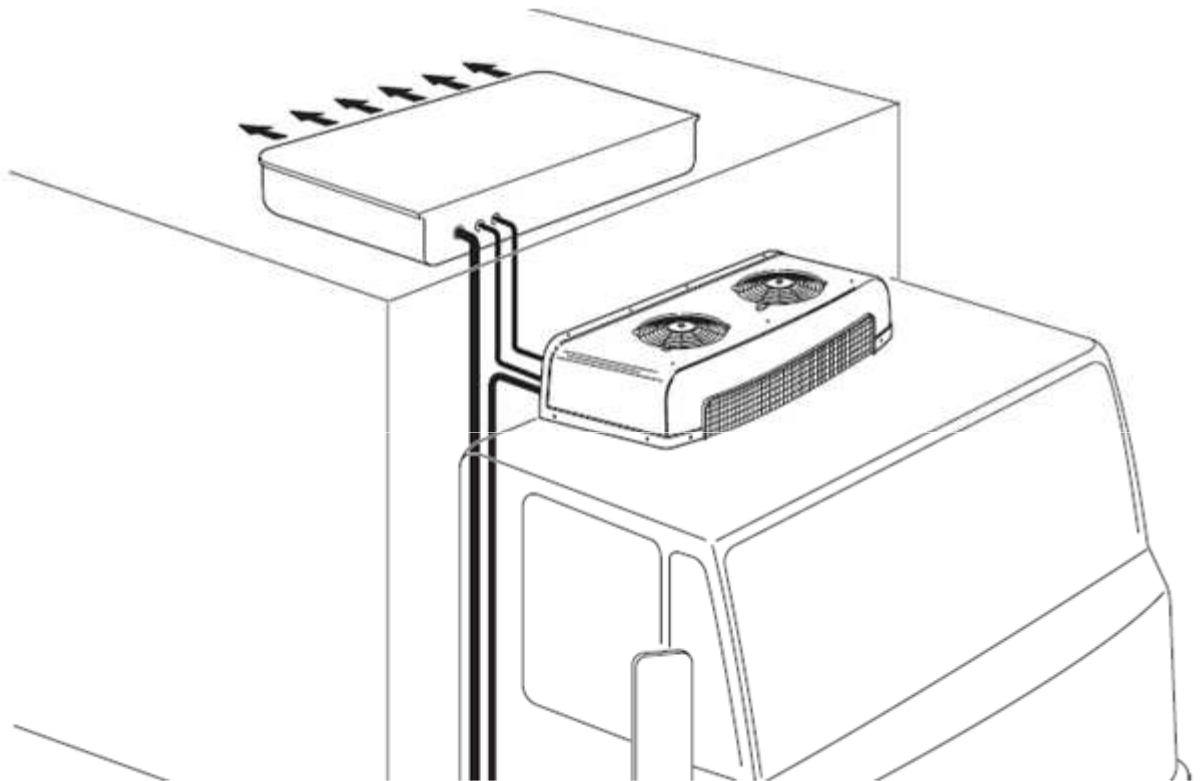


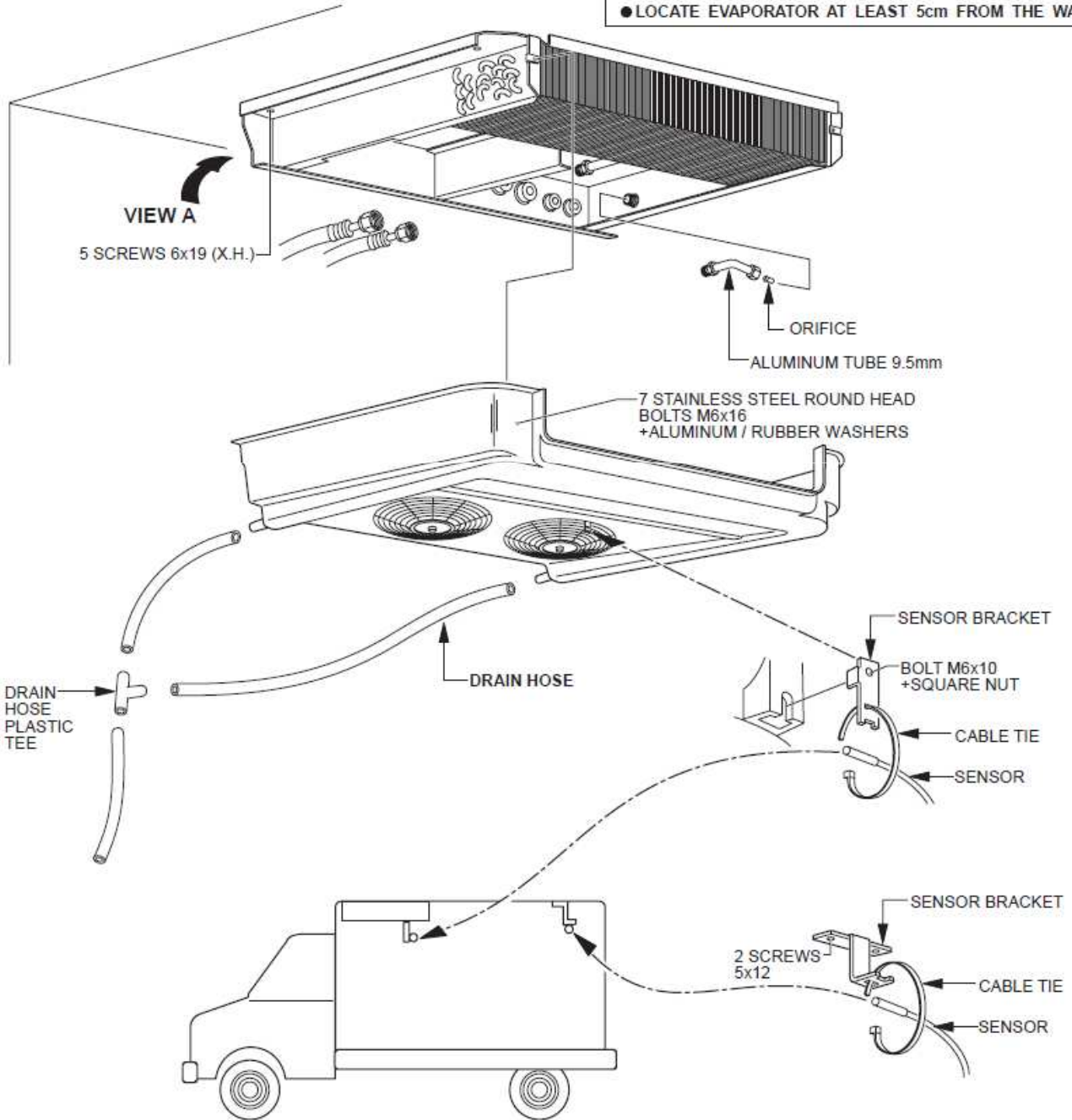
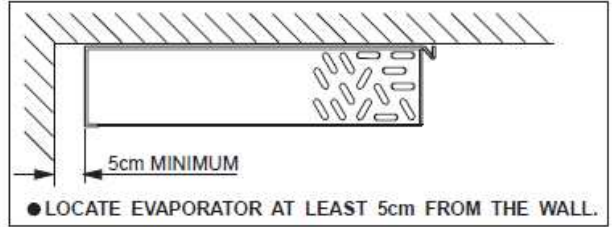
TRC-2000 & TRE-2000

12V & 24V



	<i>FOR +0°C</i>	<i>FOR -20°C</i>
Refrigeration capacity at ambient temperature 30°C	2378w	1230w
Maximum volume of cooling box	14m ³	8.5m ³
Refrigerant	R-134a	404A or 507
Refrigerant charge	1600±100gr.	1950±100gr.
Oil charge In addition to the existing oil in the compressor	100cc	100cc
Condenser's power consumption	6A -12V, 3A -24V	6A -12V, 3A -24V
Evaporator's power consumption	12A -12V, 6A -24V	12A -12V, 6A -24V
Evaporator's air flow	1560m ³ /h	1560m ³ /h
Condenser's weight	14.5Kg	14.5Kg
Evaporator's weight	11.0Kg	11.0Kg

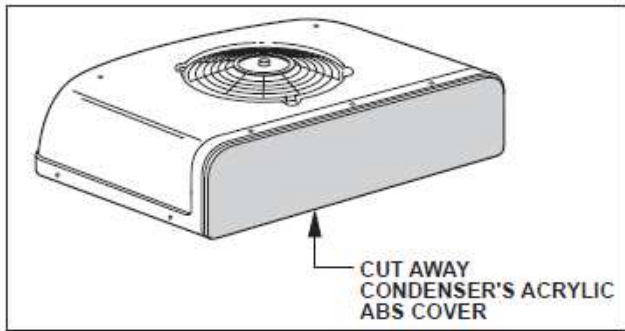
VIEW A



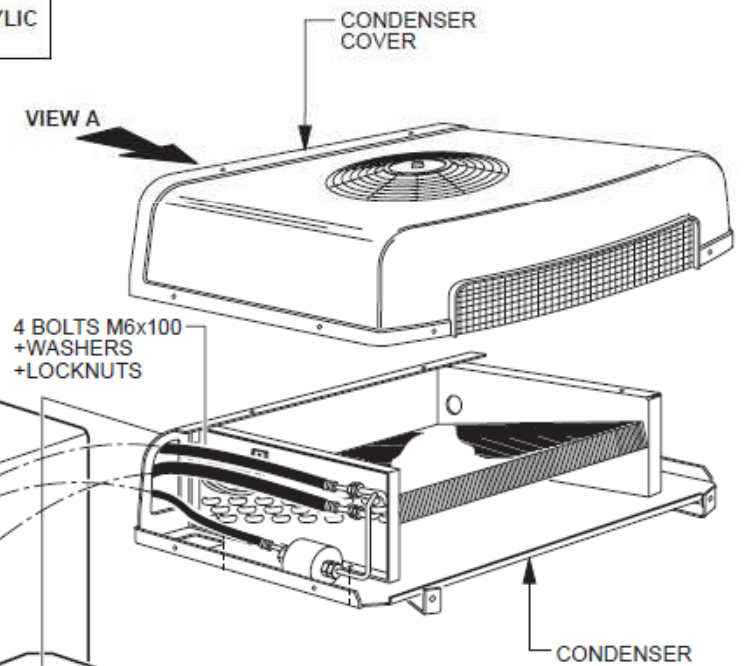
- INSTALL FIRST SENSOR AT THE AIR INLET OF EVAPORATOR AS SHOWN.
- FOR UNITS WITH AUTOMATIC DEFROSTING SYSTEM INSTALL SECOND SENSOR AT THE CENTER OF THE CEILING 50cm FROM THE REAR DOORS.

INSTALLATION ON FRONT WALL OF COOLING BOX

VIEW A

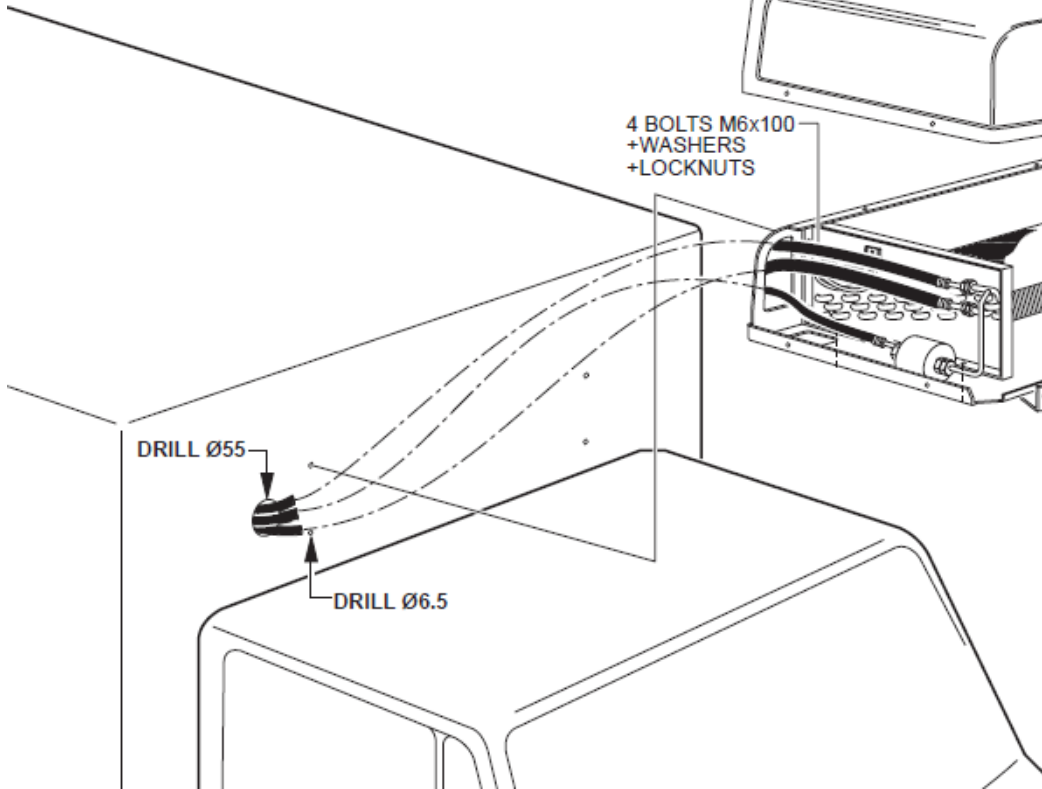


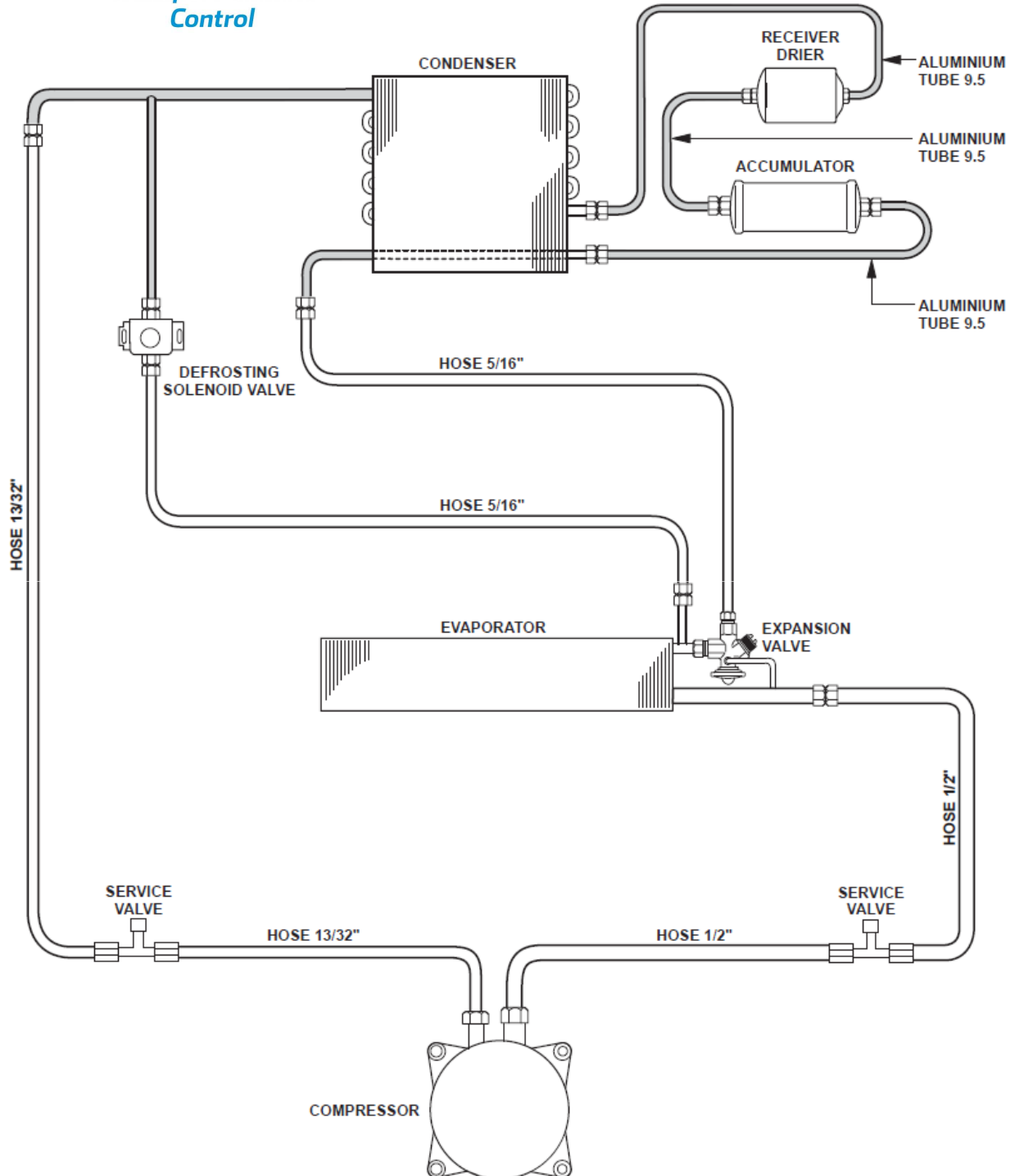
VIEW A



DRILL Ø55

DRILL Ø6.5





IMPORTANT (ESPECIALLY WHEN USING REFRIGERANT 404A OR 507):
 AFTER VACUUMING THE SYSTEM, FILL IT UP AS MUCH AS POSSIBLE THROUGH THE CHARGE HOSE 13/32" WHILE THE ENGINE IS SHUT OFF. ONLY THEN FILL UP THE REMAINING AMOUNT OF GAS NEEDED THROUGH THE SUCTION HOSE 1/2" WHILE THE ENGINE IS RUNNING AT 1500 R.P.M. AND THE REFRIGERATION SYSTEM IS WORKING IN FULL CAPACITY.

